

Automated Web Slideshows in Photoshop

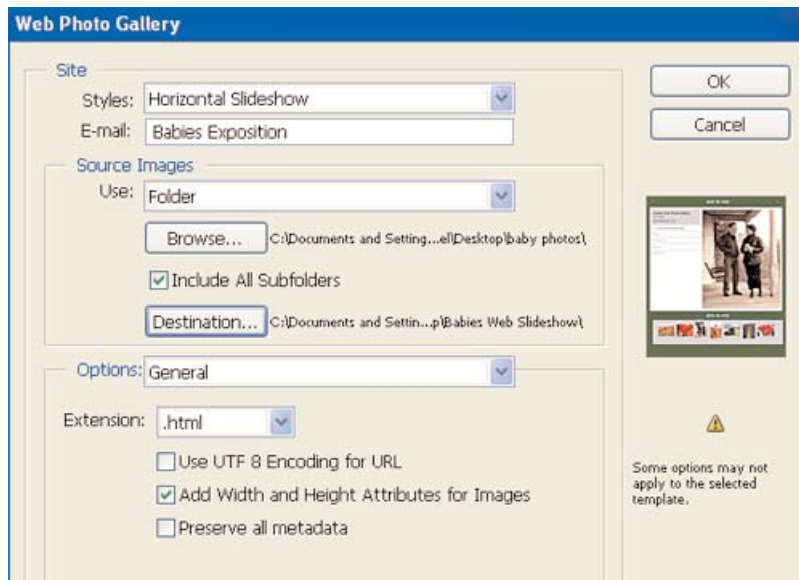
1. Create two folders. One blank names _____ slideshow; this is where your completed slideshow will go. No spaces in this folder name. The second one should have the photos that you want to include in your web slideshow. Don't worry how they are formatted.

2. Open up Photoshop. Go FILE --> AUTOMATE --> WEB PHOTO GALLERY.

3. The first of several set up screens will appear. There are a lot of styles, a preview of them appears in a small picture under the cancel button. E-mail can be for anything, you don't have to put an e-mail address. Set up your folders to point to the ones you just made.

The Options selection is very important. You have to choose all 6 choices and fill them all out. Don't only do the one for "General."

Change "Extension" to match what you are using on your website.



First setup screen

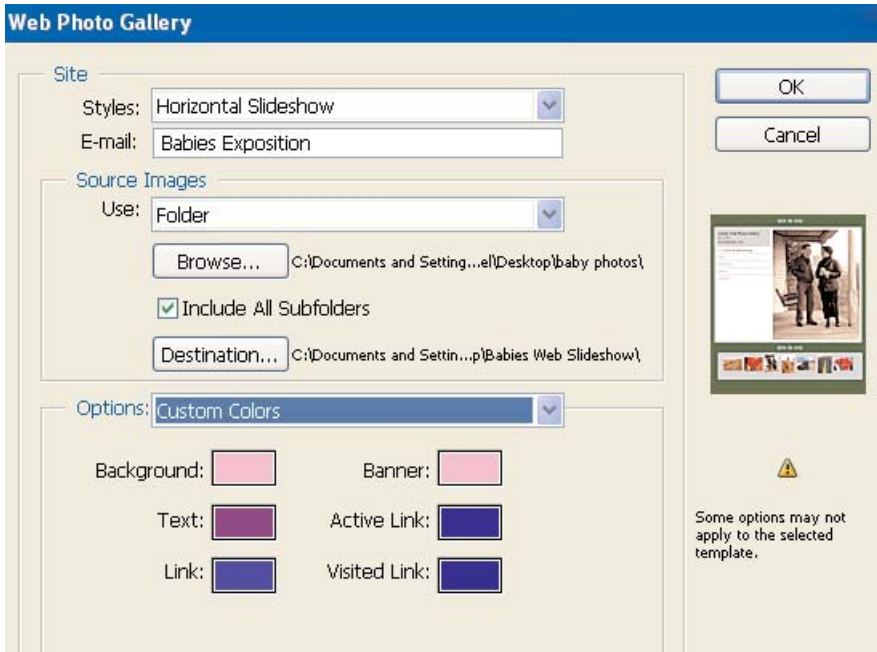


Second setup screen

For the Options “Large Images” and “Thumbnails” you don’t need to change anything. You might want to make them “Large” or make the width a maximum of a certain size.

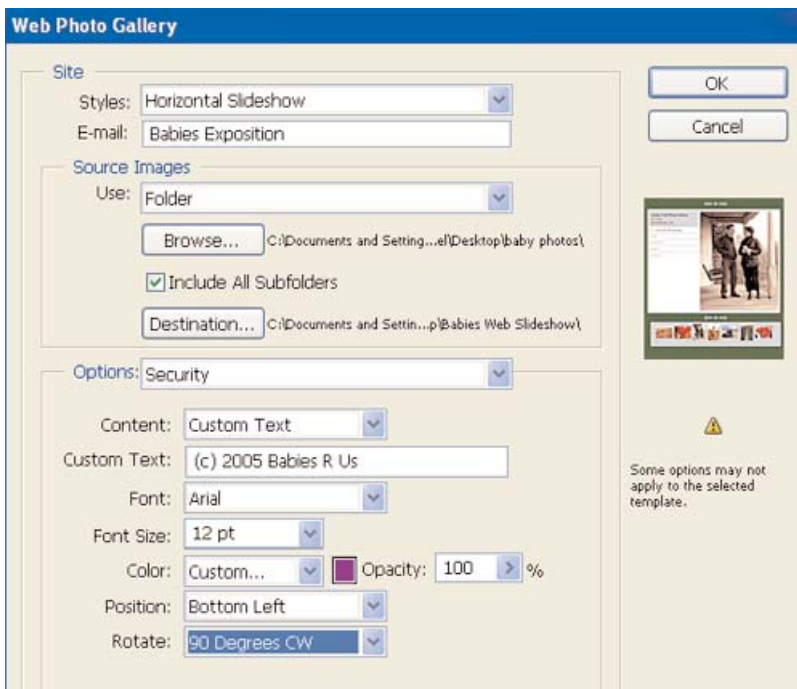
3rd & 4th setup screens

You might want to uncheck the “Filename” box so only the thumbnails appear, without the filename “image0001” or whatever it is named.



Fifth setup screen

It can look classy to have the background and banner the same colors (or not). Same with Links colors.

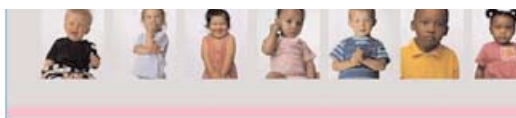


6th (and final) setup screen

You don’t need a copyright marking on each photo, but if you do, this is how to do it. If you put “Position” as center, make “Font Size” large and “Opacity” 50% it will look like the kind GettyImages.com uses (i.e. make it hard for people to take the copyright mark off).



Now, sit back and relax while Photoshop makes the thumbnails, large images and the HTML to make it all go together!



That's right, put lots of pictures up on your site easily using the automated "Web Slideshow" feature in Photoshop. See the actual slideshow. Read the tutorial.

Now copy the folder named _____ slideshow inside the folder on your hard drive where your website is.

Open up Dreamweaver and this folder called _____ slideshow to your website.

Then, open up the page in Dreamweaver you want to link to this slideshow. Type what you want to be the link (or use a photo from the slideshow) and highlight it

and create a link to the file "index.html", inside the folder _____ slideshow. Make sure you have "_blank" selected for "Target" so it opens in its own page.

Save and upload this page. Upload the folder _____ slideshow.

